

HOW TO APPLY YOUR CUSTOM WYHY CARD STICKER

1



Clean Your Card:

Gently wipe your card with a soft, dry cloth to remove any dust, oils, or residue. This helps the sticker adhere smoothly.

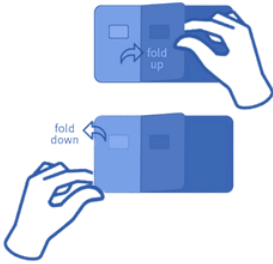
2



Line It Up:

Carefully peel the sticker from its backing. Without pressing down yet, align the cutouts (like the chip and numbers) with your actual card. Take your time. Getting this part right makes all the difference.

3



Stick with Style:

Starting from one edge, slowly press the sticker onto your card while smoothing out any air bubbles as you go. A credit card edge or your finger can help press it down evenly.

4



Smooth the Surface:

Once it's placed, run your finger across the whole card, especially the edges and corners, to ensure everything is securely stuck.

5



Show It Off:

Your card is now one-of-a-kind. Go ahead—swipe in style and show off your personality every time you pay.